

# Socioemotional Lab at Cal Poly Pomona

Are you passionate about working with children/adolescents? Interested in school-based mental health? If the answer is YES, then SEL Lab might be for you!

## Contact

-  Socioemotionallab.com
-  @SEL\_CPP
-  ttpumacchua@cpp.edu

The Socioemotional (SEL) Lab is recruiting 4 passionate students to join our research team (for a start date of Fall 2024). No previous research experience is needed to apply!

## About the Lab

The SEL Lab focuses on research that examines the intersection of social and emotional learning, social justice, and the promotion of culturally responsive school-based mental health. All lab members receive ongoing mentoring, participate in professional development activities, and engage in community-based work. In addition to research, all SEL lab members participate in a school-based internship at Pomona Unified School District (8-10 hours per week). The lab strongly values collaboration and a positive lab climate. In the 2024-2025 academic year, the lab will meet every Friday from 12:30-3:30 PM. Select meetings will occur in person, while others will be through Zoom. Involvement in the lab will require availability during this time. Interested applicants are encouraged to apply! See QR code - due date April 12th, 2024 at 11:59 PM

Apply!

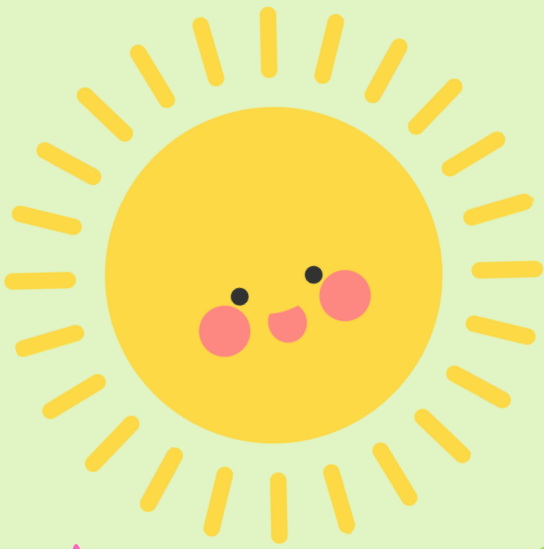


## Minimum Requirements

- Undergraduate Psych Major
- 3.0 cumulative GPA and above
- Collaborative, empathic, responsive, and hard-working
- Interested in pursuing a grad degree focused on children, adolescents, and/or families

## Preferred Qualifications

- Undergrad students with at least 2 years left prior to graduation.
- Interest in pursuing a Ph.D. program in the future.
- Strong interest in community-based work & social justice.



Interested in joining  
the CPP Socioemotional Research  
Lab? Then join us for our  
virtual info session!

WHEN?!

12:30 - 1:15 PM  
FRIDAY, MARCH 29TH

RESEARCH  
IS FUN!!



ZOOM MEETING ID  
857 8570 8477

[www.socioemotionalab.com](http://www.socioemotionalab.com) | IG: SEL\_CPP

for questions please e-mail Dr. Pumacahua at [ttpumacahua@cpp.edu](mailto:ttpumacahua@cpp.edu)